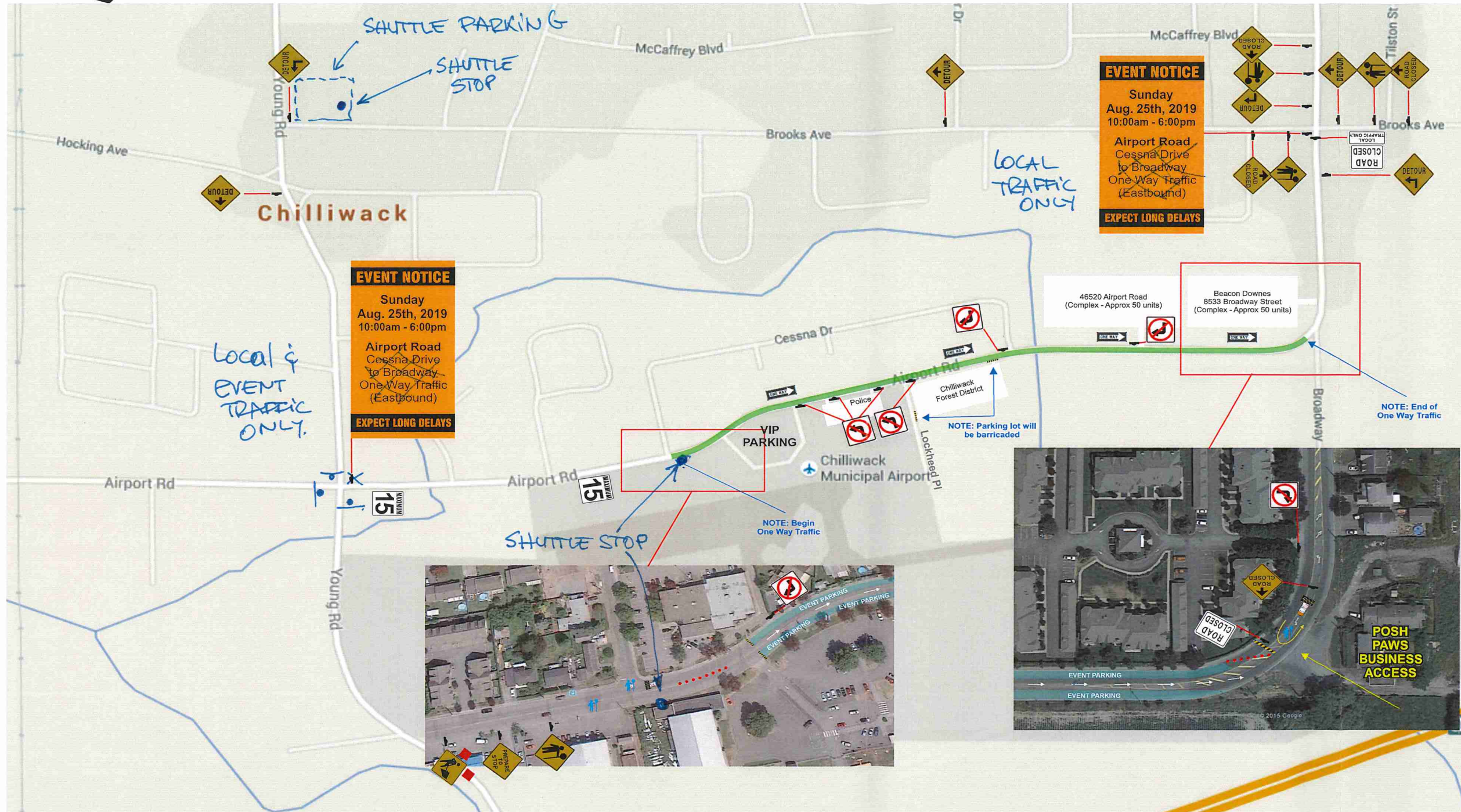
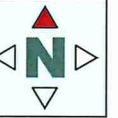


CITY OF **CHILLIWACK**  
 Engineering Department  
 2019 Flight Fest Shuttle Map



## INVENTORY

C-001-1		X 2
C-029		X 2
C-004		X 1
C-030-6A		X 5
C-005-A		X 3
C-007R1		X 1
C-007L1		X 2
		X 2
R-12T		X 1
R-12		X 2
R-001-5L		X 4
R-001-5R		X 4
Buffer Vehicle & FAB		X 2

Contractor Name: <b>Chilliwack Flight Fest</b>		
TCP #: <b>TCP 1</b>		
Date: <b>August 25th, 2019</b>		
Job Description: <b>Air Show Traffic Control and Parking</b>		
Event Notice Signs to be placed a minimum 14 days prior to the event.		
Traffic Supervisor Contact:	Phone:	Email:
<b>Angelia Fox</b>	<b>604-858-7730</b>	<b>Angelia@StreetwiseTraffic.ca</b>
Traffic Plan Contact:	Phone:	Email:
<b>Tehjay Fox</b>	<b>604-799-6750</b>	<b>Tehjay@StreetwiseTraffic.ca</b>

### LEGEND

	TRAFFIC CONTROL PERSONNEL		TRAFFIC BARREL
	SIGN STAND (TRIPOD)		TUBULAR MARKER - TYPE D
	SIGN STAND (WINDMASTER)		TRAFFIC CONTROL VEHICLE
	SIGN FLAGS		FLASHING ARROW BOARD (FAB)
	CLASS 1 BARRICADE		EXISTING BUS STOP CLOSED
	WORKZONE		RELOCATED BUS STOP

**GENERAL NOTES**

- All traffic control shall conform to the TCM and the latest catalogue for Standard Traffic Signs
- Signs shown are representations of signs only and the MOTI Construction Sign Catalogue should be used for detailed sign design
- Dimensions shown are in meters and are the minimums except as otherwise indicated
- All permanent signage that will conflict with this site will be covered or removed while the works are in effect
- Active Work Zones and Hazards shall be delineated to protect workers and the travelling public
- Maximum distance between cone/delineator/barrel should be 10m
- Tubular markers and signs will be double based and well secured during windy conditions
- Distances may be adjusted due to urban block length